

liniLED®

Handrail

DTL Licht GmbH
Dorfstraße 18 A
94551 Rohrstetten

Tel: +49 9904 811917-5
E-Mail: info@dtl-licht.de

"Safety has never been so astonishing!"



liniLED® Handrail

The liniLED® Handrail is the result of a customized OEM project. The goal was to create a revolutionary LED-based handrail system that provides constant, functional lighting for a safe environment.

By integrating the liniLED® Top LED strip in the stainless steel liniLED® Handrail, the product is ideal for high-end indoor and outdoor projects in various sectors, such as: maritime, architecture, infrastructure, construction, health and the entertainment industry.

The liniLED® Handrail has the same light benefits as a LED fixture: energy efficient with an expected lifetime of more than 50.000 hours. Ideal for a long lasting indoor and outdoor handrail solution.

LED strips | High-quality & flexible

The high-quality, flexible liniLED® Top LED strips have a unique co-extrusion technology with built-in reflection, which guarantees an optimal light output (24 V DC).

The liniLED® Top LED strips are available in three luminous intensities (Deco, Power and Power Short Pitch) and several colours, such as: Warm White 2700K and 3000K, Natural White 4000K and Cold White 6500K. The liniLED® Top Deco LED strip is also available in the colours: red, green, blue and amber.

	liniLED® Deco	liniLED® Power	liniLED® PSP
2700K	✓	✓	✓
3000K	✓	✓	✓
4000K	✓	✓	✓
6500K	✓	✓	✓
Red	✓		
Green	✓		
Blue	✓		
Amber	✓		

Table 1 | The liniLED® Top LED strips are available in various colours. For more information about the liniLED® LED strips see our liniLED® Catalogue.



Handrail | Luxurious & functional

The liniLED® LED strip is fully integrated into the handrail. The liniLED® Handrail is made of stainless steel (AISI 316) and is therefore ideal to use indoor and outdoor (IP65). The standard round version of the handrail has an outer diameter of 42.4 mm.

The liniLED® Handrail can be wall mounted or post-mounted.

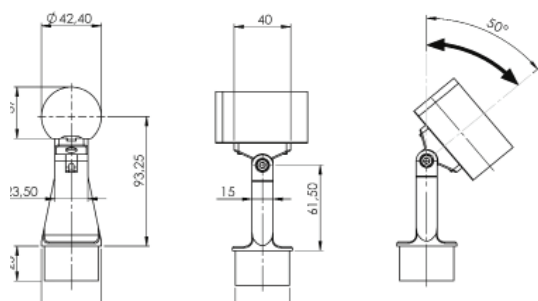
The maximum length of the handrail unit is 6 meters and can easily be connected mechanically or by welding. The specially designed liniLED® Handrail connectors ensure a continuous line of light, without any interruption.

The liniLED® Handrail components are designed for quick and easy installation and maintenance. All necessary parts required for installation are readily available, such as: cables, connectors, profiles and brackets.

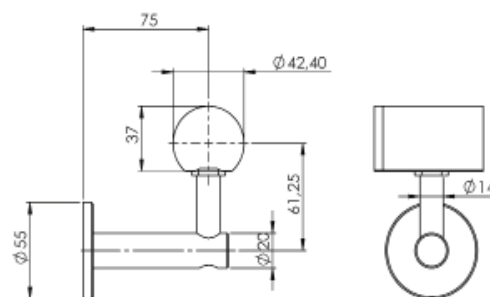
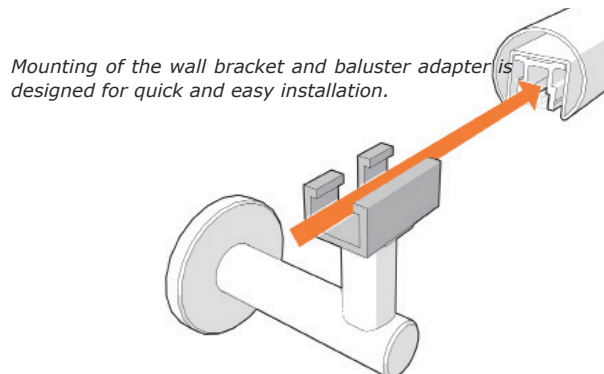
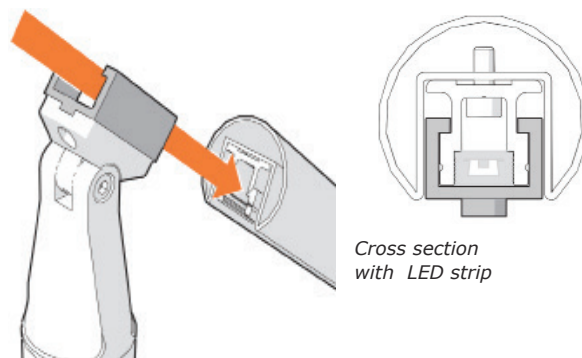
Smart Design

The wall brackets and baluster adapters are designed to move freely within the profile without affecting the continuity of the LED strip. To match the contemporary design of the handrail, the power cables are fully integrated in the brackets and adapters.

When assembling the handrail, the position of the brackets and adapters can easily be modified.



Dimensions of the baluster adapter - front and side view



Dimensions of the wall bracket - front and side view

Code	liniLED® Handrail including:	Angle	Light output	Max. power
12000	liniLED® Top Warm White 3000K D [m]	120°	96 lm/m	3.5 W/m
12001	liniLED® Top Natural White 4000K D [m]	120°	96 lm/m	3.5 W/m
12002	liniLED® Top Cold White 6500K D [m]	120°	112 lm/m	3.5 W/m
12003	liniLED® Top Red D [m]	120°	70 lm/m	4.5 W/m
12004	liniLED® Top Green D [m]	120°	97 lm/m	3.5 W/m
12005	liniLED® Top Blue D [m]	120°	23 lm/m	3.5 W/m
12006	liniLED® Top Amber D [m]	120°	43 lm/m	4.5 W/m
12007	liniLED® Top Warm White 2700K P [m]	120°	351 lm/m	4.3 W/m
12008	liniLED® Top Warm White 3000K P [m]	120°	351 lm/m	4.3 W/m
12009	liniLED® Top Natural White 4000K P [m]	120°	351 lm/m	4.3 W/m
12010	liniLED® Top Cold White 6500K P [m]	120°	351 lm/m	4.3 W/m
12011	liniLED® Top Warm White 2700K PSP [m]	110°	683 lm/m	9.7 W/m
12012	liniLED® Top Warm White 3000K PSP [m]	110°	683 lm/m	9.7 W/m
12013	liniLED® Top Natural White 4000K PSP [m]	110°	740 lm/m	9.7 W/m
12014	liniLED® Top Cold White 6500K PSP [m]	110°	740 lm/m	9.7 W/m

Table 2 | Technical specifications of the liniLED® Top LED strip

reddot award winner

Handrail

The stainless steel (AISI 316) liniLED® Handrail is a revolutionary LED based handrail system that provides functional lighting for a safe environment. It has the same light benefits as a LED fixture: durable, energy efficient and available in various luminous intensities and lighting colours. The maximum unit length of the handrail is 6 metres and can easily be connected mechanically or by welding.

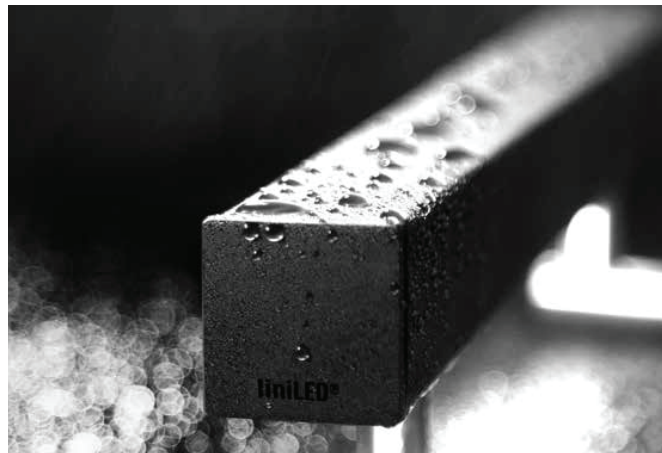
The liniLED® Handrails are available in several shapes: rectangular, square and round (Ø42.4 mm and Ø48.3 mm).

Why choose the liniLED® Handrail?

- European quality, design & manufacturing
- Durable materials, stainless steel (AISI 316, IK10)
- Available in various shapes/dimensions
- Beautiful continuous light line
- Symmetrical & Asymmetrical
- High quality liniLED® LED strips
- Various light colours & luminous intensities
- Available with high luminous flux
- Dimmable & low power consumption
- Designed for quick & easy installation
- Wall mounting & post mounting
- Indoor & outdoor



reddot award
winner





Continuous light line

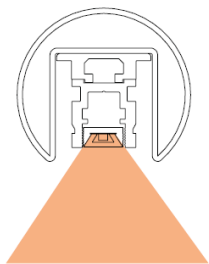
The liniLED® Handrails are integrated with high quality, flexible liniLED® LED strips. They are available in several luminous intensities (Deco, Power, High Power, Photon, Tunable White and RGB) and lighting colours (2000K up to 6500K, Red, Green, Blue and Amber). The special couplers ensure a continuous light line, without any interruption.

The liniLED® Handrail components are designed for quick and easy installation and maintenance. Thanks to the smart design of the profiles, the power cables are fully integrated in the brackets and adapters.



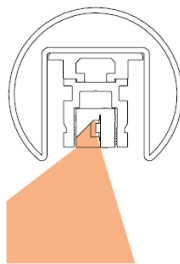
Asymmetrical light effect

The liniLED® Handrails come standard with Top LED strips. These strips are suitable for all handrails. For an asymmetrical light effect the liniLED® Handrail 48.3 mm and Side LED strips should be combined. Ask us about the customised options.



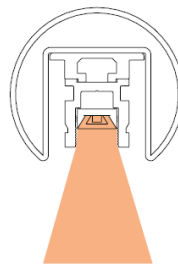
Symmetrical

Handrail 48.3 with Top LED strip
Product code: 12049



Asymmetrical

Handrail 48.3 with Side LED strip
Product code: 12134



Diffuse

Handrail 48.3 with Top HP LED strip
Product code: 12134



Easy installation

The liniLED® Handrails can be wall mounted or post mounted. Thanks to the special design, the brackets and adapters can move freely in the profile to ensure a continuous light line. The exact position of the brackets and adapters can be modified during installation.

When post mounting, the liniLED® Handrail can be delivered with several infill options, e.g. glass, cables, kneebars, etc. It is possible to prefabricate the posts. For example: if glass infill is desired, the posts can be customised with glass clamps.

Ask us about the customised options.

"The liniLED® Handrails can be wall mounted or post mounted."



post mounting



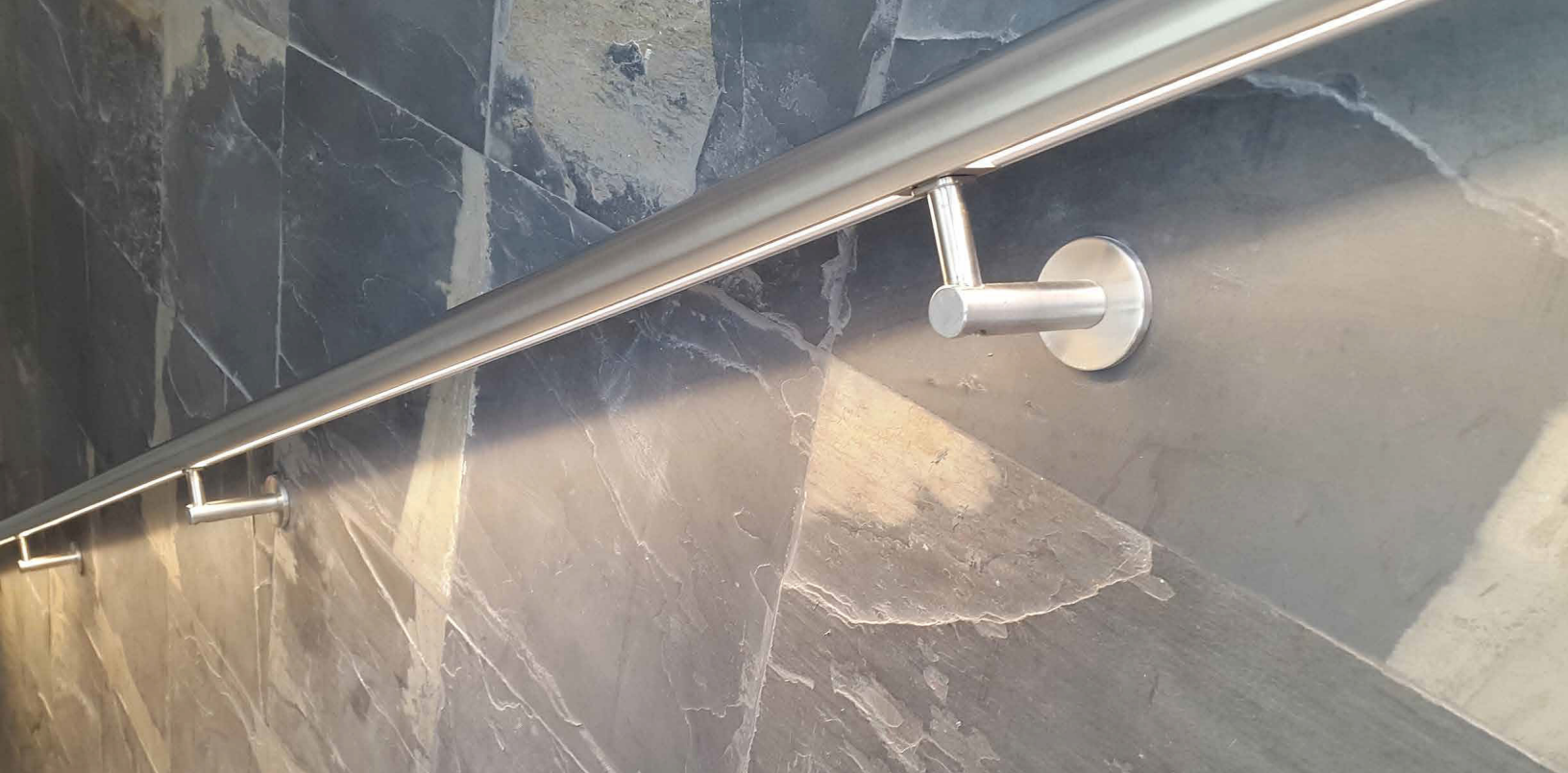
wall mounting



glass infill option



glass wall/panel mounting



Diffuse light effect

The liniLED® Handrail is standard delivered with a protective cover.

Depending on the desired light effect, you can choose between a clear, frosted or diffuse cover. When using the clear cover, the light dots of the liniLED® LED strips are visible. In case a more 'diffuse' light effect is desired, the frosted cover is the right choice. By using the frosted cover, the light dots of the LED strips are 'blurred' and glare is reduced (-45%). The maximum diffuse effect can be reached by using the liniLED® Handrail 48.3 mm (product code: 12134) in combination with the liniLED® Top High Power LED strip and the diffuse cover.



clear

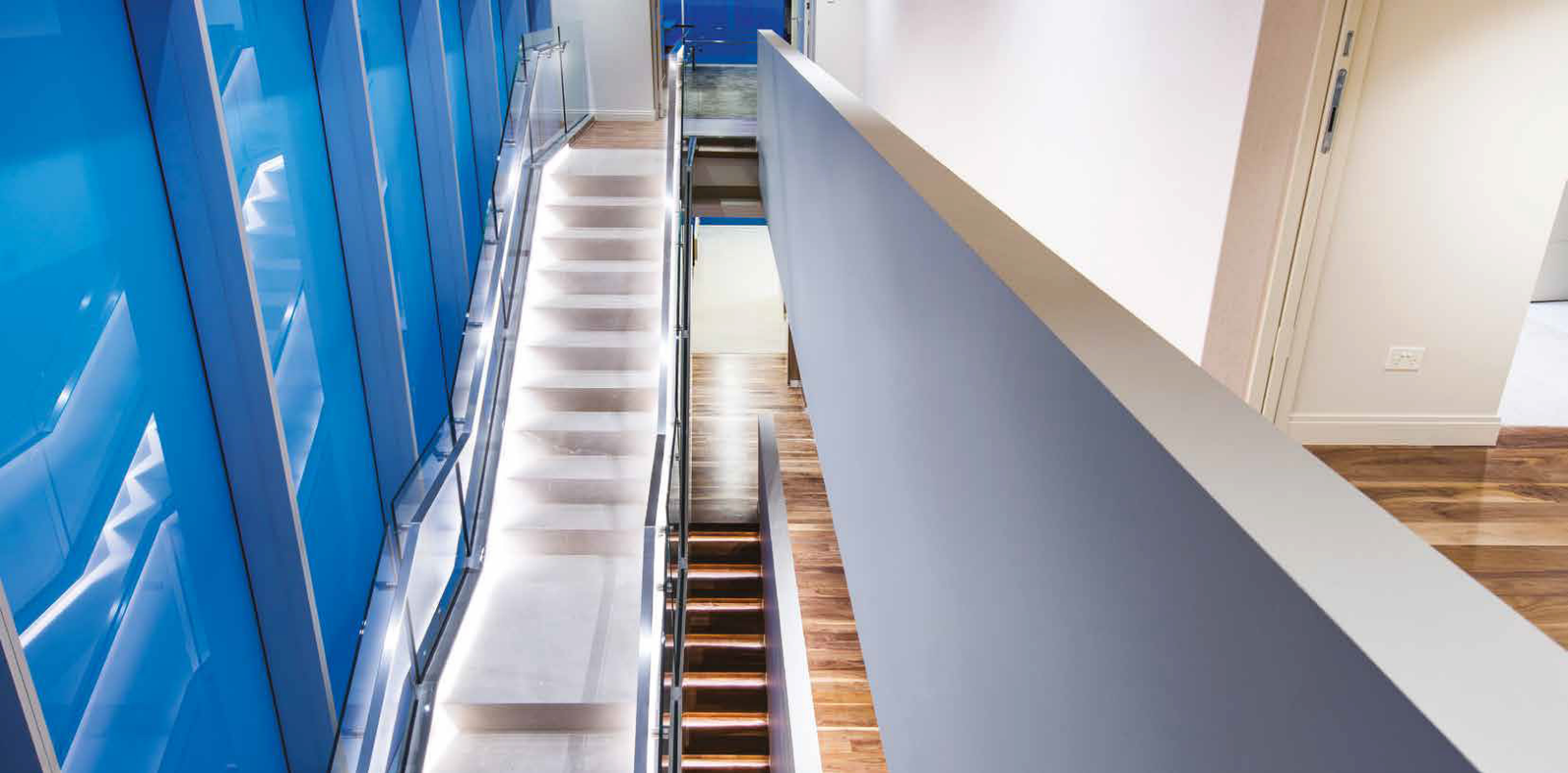


frosted



diffuse (only for 48.3)

"Depending on the desired light effect, you can choose between a clear, frosted or diffuse cover."



Handrail composition

As each lighting project is unique, all the components of the liniLED® Handrail are professionally customised. Therefore it is of great importance to provide a fully dimensioned plan, DWG files and detailed drawings, in addition to the basic steps below.

For the complete overview of possible steps and costs, please visit our website:

www.liniLED.com/request-for-quotation

Step 1: LED strip | Luminous intensity & colour

The liniLED® Handrails come standard with Top LED strips. For an asymmetrical light effect the liniLED® Handrail 48.3 mm and Side LED strips should be combined.

All LED strips are available in several luminous intensities (Deco, Power, High Power, Photon, Tunable White and RGB) and lighting colours (2000K t/m 6500K, Red, Green, Blue and Amber).

Step 2: Shape | Application area

The liniLED® Handrails are available in several shapes: rectangular, square and round (Ø42.4 mm and Ø48.3 mm).

Note!

An asymmetrical light effect is only possible with the liniLED® Handrail 48.3 mm. The liniLED®

Step 3: Cover | Clear, frosted or diffuse

The liniLED® Handrails are standard delivered with a protective cover. Thanks to the cover the liniLED® LED strips are protected against violence and/or damage. Depending on the desired light effect, you can choose between clear, frosted or diffuse. The Diffuse cover (product code: 12124) only in combination with the Handrail 48.3 (product code: 12134) and a liniLED® High Power LED strip.

Step 4: Angles | Standard or customised

There are three standard angles for the liniLED® Handrails: 45°, 90° and 120°.

Other angles can be customised upon request.

Step 5: Mounting

The liniLED® Handrails can be wall mounted or post mounted. All components are designed for quick installation and easy maintenance. In case of post mounting it is possible to install the liniLED® Handrail with several infill options, e.g. glass, cables, railings, etc.

Why choose liniLED® Handrail?

The liniLED® Handrail is part of the liniLED® System: a concept which consists of high-quality, flexible LED strips (IP20, IP40, IP68), several light fixtures and a number of accessories, which are designed for quick and easy installation. The addition of the new liniLED® Handrail has enriched the liniLED® assortment.

The liniLED® assortment is developed and produced in Europe under exceptionally high quality standards. Therefore it can be applied both indoor and outdoor, as functional or decorative lighting. The liniLED® Handrail is available in maximum lengths of 6 metres (other lengths are available on request).

USP's | liniLED® Handrail

- European quality, design and manufacturing
- Durable materials, stainless steel (AISI 316)
- Designed for quick & easy installation
- Several mounting options (wall, post and/or glass infill)
- Ideal for indoor and outdoor applications
- High-quality, flexible liniLED® LED strips
- LED strips available in various colours & luminous in-

Customized | OEM projects

One of our specialties is to translate ideas and requirements into

astounding customized OEM projects. We aim for the best possible results and always look for innovative options and possibilities. It is our goal to realize your dream. Each hand-rail application is professionally customized and will certainly meet your expectations.

For more information about the liniLED® Handrail, please contact us. We will be happy to provide you with all the necessary information and are looking forward on advising you about the best available options for your project.

Applications

Airports	Offices
Train & Metro stations	Theatres & Cinemas
Shopping centres	Hospitals & Health
industry	
Hotels & Catering	Sport Stadiums
Docks & Parks	Universities & High





DEUTSCHLAND TECHNIK LICHT DTL

DTL Licht GmbH
Dorfstraße 18 A
94551 Hunding - OT Rohrstetten

Tel: +49 9904 811917-5
Fax: +49 9904 811917-9
E-Mail: info@dtl-licht.de

www.dtl-licht.de
